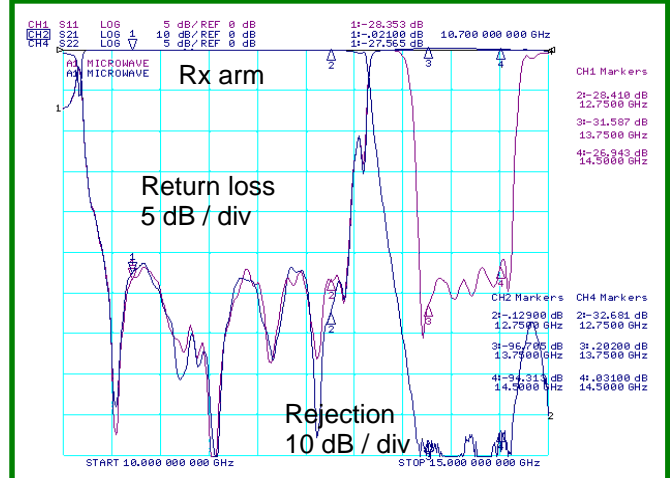
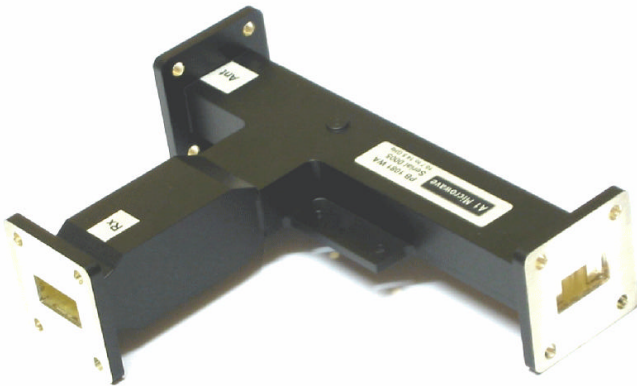


# A1 Microwave

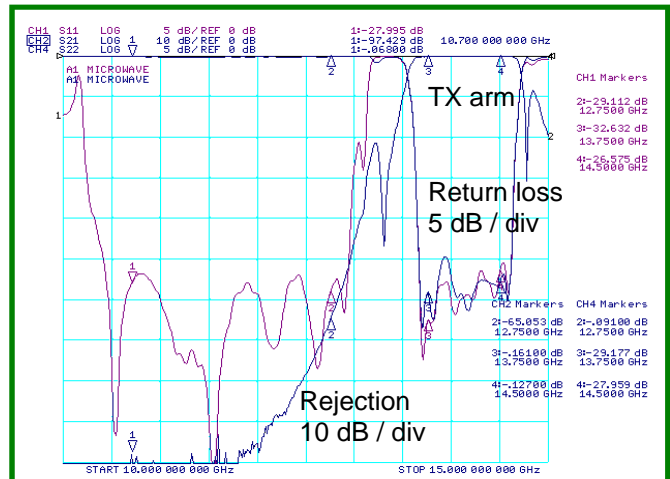
## Ku-band Satcom Diplexer, PB1081WA



- Low insertion loss
- High rejection between bands

The PB1081WA diplexer is designed to connect a transmitter and a receiver to a common antenna port with minimum insertion loss and maximum isolation between the two channels.

The PB1081WA is one of a family of diplexers for Ku band TX-RX channel separation.



### Ordering information :- Model number PB1081WA

Passbands	10.7 to 12.75 GHz and 13.75 to 14.5 GHz
Passband insertion loss	0.2 dB typical RX, 0.25 dB typical TX
Passband return loss	23 dB typical
Rejection:	of transmitter in RX arm 90 dB typical, 80 dB min of receiver in TX arm 65 dB typical, 55 dB min
Overall length	149 mm
Flanges	UBR 120 (alternative flanges and coax interfaces available)

**Enquiries@A1Microwave.com is your fastest route to custom designed microwave and RF filters, diplexers, passive coaxial and waveguide components, 100 MHz to 50 GHz**

Sales office : A1 Microwave Ltd. 27 Coopers Yard, Newark, Notts, NG24 4UH, England

Telephone : +44 (0) 1636 707 642

Fax : +44 (0) 1636 707 643

E mail : enquiries@A1Microwave.com

Web : <http://www.A1Microwave.com>

Issued :- 22 February 2008