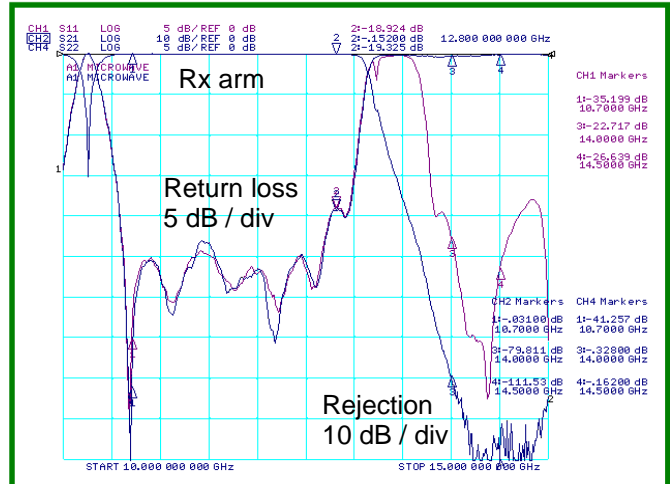
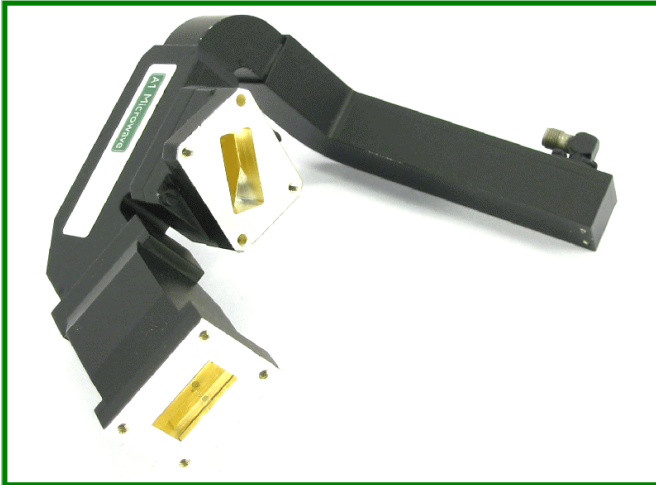


A1 Microwave

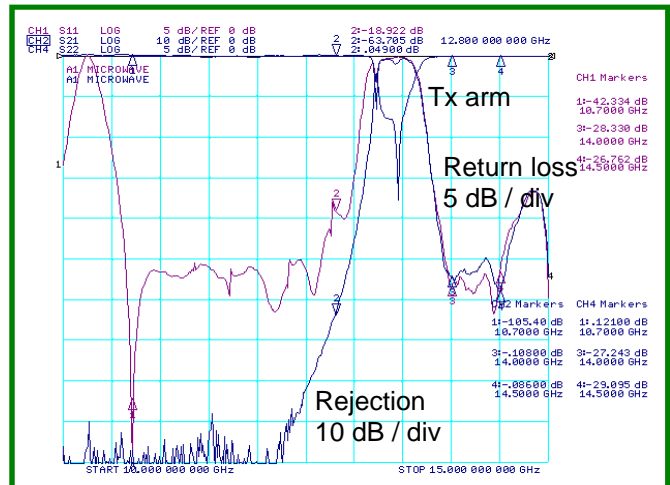
Ku-band Satcom Diplexer, PB1112WD



- Extremely compact
- High rejection between bands

The PB1112WD diplexer is designed to connect a transmitter and a receiver to a common antenna port with minimum insertion loss and maximum isolation between the two channels.

The PB1112WD is one of a family of diplexers for Ku band TX-RX channel separation.



Ordering information :- Model number PB1112WD

Passbands	10.7 to 12.8 GHz and 14 to 14.5 GHz
Passband insertion loss	0.15 dB typical RX, 0.1 dB typical TX
Passband return loss	23 dB min
Rejection:	of transmitter in RX arm 75 dB typical
	of receiver in TX arm 60 dB typical
Flanges	Special (alternative flanges and coax interfaces available)

Enquiries@A1Microwave.com is your fastest route to custom designed microwave and RF filters, diplexers, passive coaxial and waveguide components, 100 MHz to 50 GHz

Sales office : A1 Microwave Ltd. 27 Coopers Yard, Newark, Notts, NG24 4UH, England

Telephone : +44 (0) 1636 707 642

Fax : +44 (0) 1636 707 643

E mail : enquiries@A1Microwave.com

Web : <http://www.A1Microwave.com>

Issued :- 16 March 2006