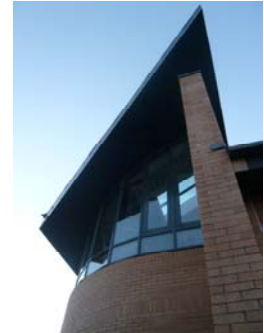


Science wing extension The High School of Glasgow



Client: **The High School of Glasgow**
Contract value: **£3,200,000**

Completed: **August 2008**

This further project for the Senior School continues the previous approach of vertical extension over existing occupied classrooms. Ground consolidation work, piling and main frame steelwork were carried out during the summer vacation, allowing superstructure work to continue thereafter without losing classroom facilities. During the following summer, the existing laboratories were refurbished.

The extension includes undeveloped roof space for future use and on the first floor provides new Chemistry and Biology labs of around 90sqm each, staff bases and Technicians lab. The ground floor provides refurbished and enlarged Physics labs, with smaller sixth form and Home Economics labs.

The main elevations have been carefully integrated to the existing style, which seamlessly incorporates the original single storey school buildings. In the internal courtyard, the new structure displays a more modern façade, and allows future insertion of second floor windows to the roof space within the timber panels.

The Biology greenhouse has been incorporated at first floor level of the main elevations facing Crow Road, providing a glazed corner feature. The new building is linked at first floor level into the previous projects which formed Drama and Music departments, providing both emergency escape and improved upper floor circulation.