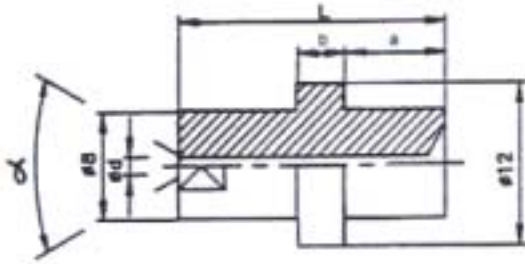


Fan Jet Nozzles

Type 19

Material: Hardened Stainless Steel
Ceramic - special order.

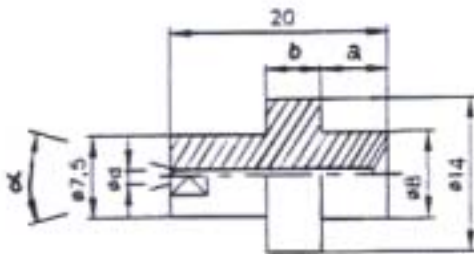


Accessories: Page 6

Nozzle Type	Ø d (mm)	L (mm)	a (mm)	b (mm)	Working Pressure max. bar / PSI	Spraying Angle
Type 19	0.50 - 0.70	14	5	3.5	1,500 / 20,000	10° / 15° / 20° / 30° / 45° / 60°
	0.80 - 3.00	20	7.5	3.5	1,500 / 20,000	10° / 15° / 20° / 30° / 45° / 60°

Type 8

Material: Hardened Stainless Steel
Ceramic - special order.



Accessories: Page 6

Nozzle Type	Ø d (mm)	L (mm)	a (mm)	b (mm)	Working Pressure max. bar / PSI	Spraying Angle
Type 8	0.50 - 0.70	14	2	6	2,000 / 30,000	10° / 15° / 20° / 30° / 45° / 60°
	0.80 - 3.00	20	4.5	6	2,000 / 30,000	10° / 15° / 20° / 30° / 45° / 60°