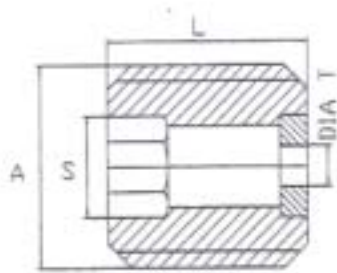


Round Jet Sapphire Nozzles

Type 030 to 100

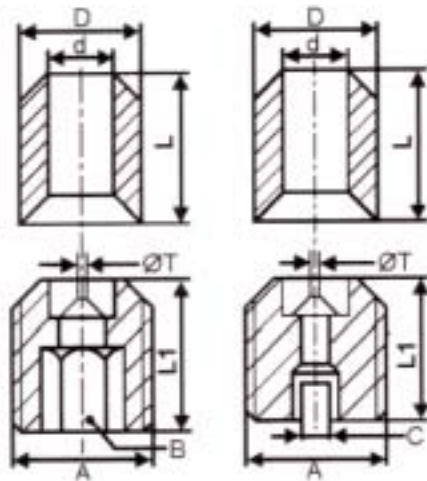
Material: Stainless Steel and Sapphire



Nozzle Type	Thread A	Length (mm) L	Hexagon Socket S (mm)	Working Pressure max. bar / PSI	Diameters available Ø T mm
030	M3	4	1.5	1,000 / 15,000	0.10 - 1.00
040	M4	4	2.0	1,000 / 15,000	0.10 - 1.70
050	M5	5	2.5	1,000 / 15,000	0.10 - 1.70
060	M6	6	3.0	1,000 / 15,000	0.10 - 3.00
080	M8	8	4.0	1,000 / 15,000	0.10 - 4.00
100	M10	10	5.0	1,000 / 15,000	0.50 - 4.00

Type 045 to 082

Material: Stainless Steel and Sapphire



Plugs available for each type of nozzle

Nozzle Type	Thread A mm	Length L1 mm	Hex B mm	Slot C mm	Seal						Working Pressure max. bar		Ø T available from to	
					Brass seal			Steel seal			Brass	Steel		
					D	d	L	D	d	L				
045	M4	4	2	-	3.2	2	4	3.3	1.2	5	1,500	4,000	0.20	1.00
045	M4	4	2	-	3.2	2	2	-	-	-	1,500	-	0.20	1.00
055	M5	5	2.5	-	-	-	-	4	2	5	-	3,000	0.20	1.00
065	M6	6	3	-	4.8	2.5	7.5	4.8	1.8	7.5	1,500	2,800	0.20	1.00
165	M6x0.75	6	-	1.5	5	2	9	-	-	-	2,000	-	0.20	1.00
070	M7x0.5	6	4	-	-	-	-	-	-	-	2,000	-	0.20	1.50
082	M8x1.0	8	3	-	6.5	3	6	-	-	-	2,000	-	0.20	1.00