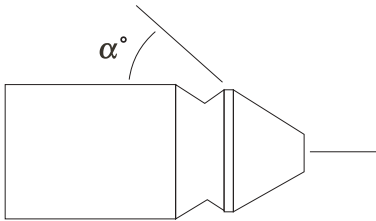
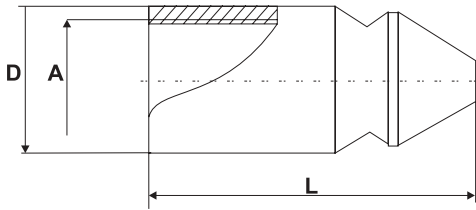


# Tube Cleaning Nozzles

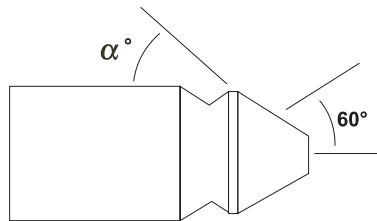
## Type 150-2/ 155-7/ 160-2

Material: Hardened Stainless Steel



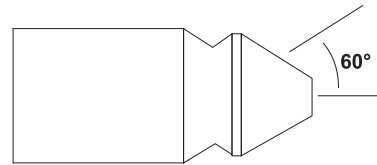
### Type 150/ 151/ 152

Available:  
with 2, 3, 4, 5, 6 Back Jets  
with or without Front Jet



### Type 160/ 161/ 162

Available:  
with 3 Forward Jets  
and 3 Back Jets  
with or without Front Jet



### Type 155/ 156/ 157

Available:  
with 3, 4, 5, 6, 7 Forward Jets  
with or without Front Jet

Nozzle Type	Connection A	Ø D (mm)	Length L (mm)	Angle $\alpha^\circ$	Working Pressure max. bar / PSI
152/ 162/ 157	M7	10	21	45°, 60°, 75°	1,000 / 15,000
150/ 160/ 155	1/8" BSP	12	28	45°, 60°, 75°	1,000 / 15,000
151/ 161/ 156	1/4" BSP	16	33	45°, 60°, 75°	1,000 / 15,000