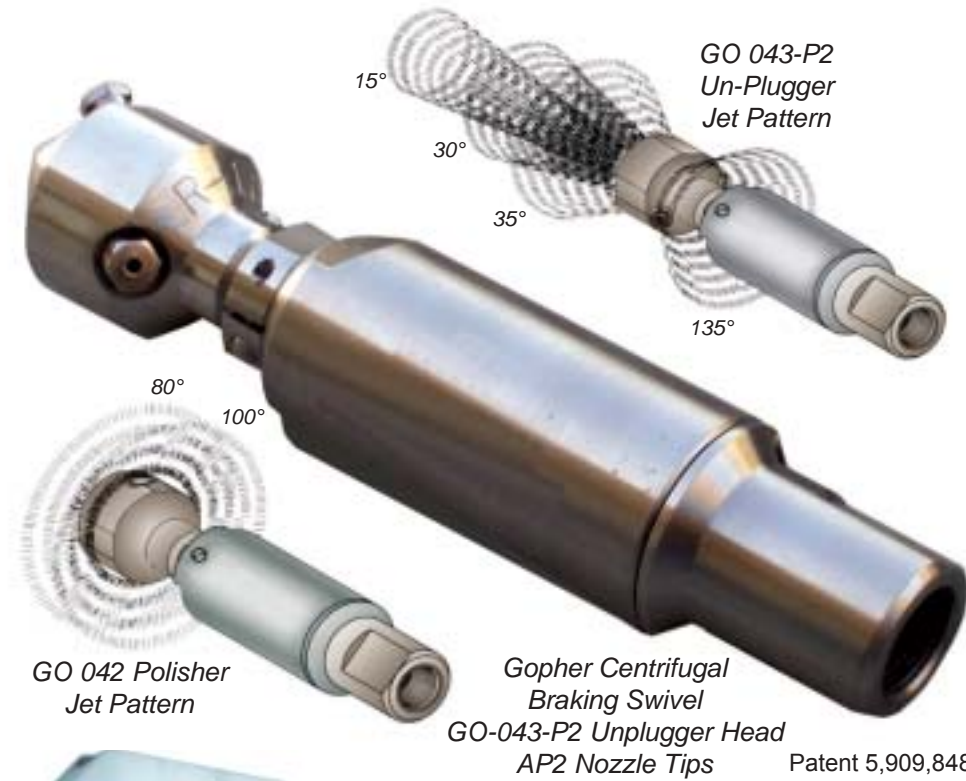


GOPHER 2D Self-Rotating Nozzle

20 Kpsi & 40 Kpsi Models now available

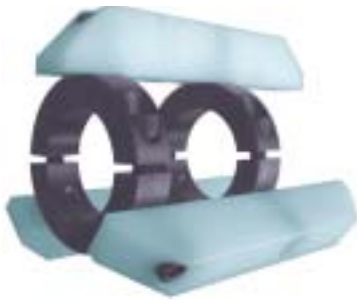


The tube cleaning version of the **Barracuda**. The **Gopher** uses the same proven centrifugal rotation speed control, but with heads designed to unplug or polish internal surfaces of straight tubes. Powerful replaceable tips are used in the heads - **AP2 Tips** in the **GO-M9**, **OS4 Sapphire Tips** in the **GO-H9**. For lines bigger than 6" diameter, the **BJV-20K** is recommended.

Clean piping, evaporator tubes, process drains

Power to handle coke, polymers, coatings, latex

For straight tubes 1-7/8 in. ID and larger



GO 070 Centralizer
Replaceable Skids
8" Diameter

GO 075 Centralizer
One Piece Plastic
3", or 4.5" Diameter



Specifications

Model	GO-M9	GO-H9
Diameter	1-5/8 in. 41 mm	1-5/8 in. 41 mm
Inlet Port	9/16 MP	9/16 HP
Head Diameter	1-5/8 in. 41 mm	1-5/8 in. 41 mm
Length Overall	7.8 in. 19.8 cm	7.8 in. 19.8 cm
Weight, with Head	4 lb 1.80 kg	4 lb 1.80 kg
Max. Pressure	20 Kpsi 1380 bar	40 Kpsi 2760 bar
Flow Capacity	25 gpm 95 l/min	12 gpm 45 lpm
Flow Rating	0.84 Cv	0.43 Cv
Rotation Speed	600-1000 rpm	600-1000 rpm
Head Selection		
Polisher Lo-Flow Model	7-13 gpm 27-49 lpm GO 042-R.14	3.8-6.6 gpm 17-27 lpm GO 342-R.14
Polisher Hi-Flow Model	14-25 gpm 53-95 lpm GO 042-R.07	7-12 gpm 29-45 lpm GO 342-R.08
Unplugging Lo-Flow Model	8-14 gpm 30-53 lpm GO 043-R.17	4.0-7.0 gpm 17-29 lpm GO 343-R.18
Unplugging Hi-Flow Model	15-25 gpm 57-95 lpm GO 043-R.08	7-12 gpm 29-45 lpm GO-343-R.08

- Centrifugal rotation speed control for power
- Replaceable nozzle tips
AP2 for **GO-M9**, pg. 45
OS4 for **GO-H9**, pg. 47
- Adaptors available for 15 Kpsi operation
AF 065-M9P6 for 3/8 npt
AF 065-M9P8 for 1/2 npt
- Uses motor oil for lubricant
- Easy field replacement of high pressure seal