

# RJV 2D Self-Rotating Nozzle

Clean pipes 3 to 12 in. ID

Clean process drains

Clean totes, closed head drums

Clean water well screens

Clean ducts, exhaust stacks

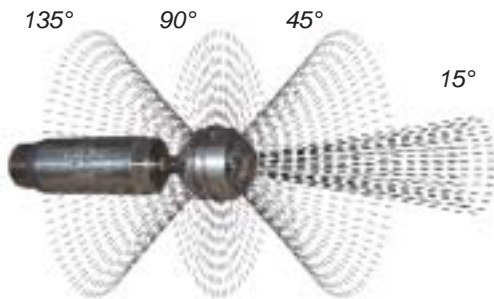
Handles straight tubes as small as 2-1/4 in. ID

**Model RJV**  
15 Kpsi, 35 gpm



*RJV Viscous Braking Swivel,  
RJ 043-P2-6 Head, AP2 Nozzle Tips  
BJ 045 Pulling Ring, and optional  
RJ 044-P4-6 Head, APF4 Nozzle Tips*

**RJ 043-P2-7  
Nozzle Head**  
15° port for  
unplugging



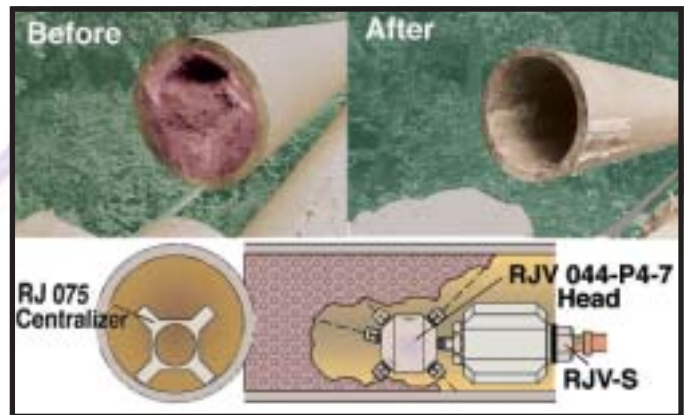
**RJ 075  
Centralizer**

- One piece plastic
- Keeps head from rubbing
- Slip-on plastic sleeve
- 3" or 4.5" diameter



**RJ 070  
Centralizer**

- Steel collars, plastic skirts
- For bigger diameter piping
- Replaceable plastic skirts
- 4, 5, 6, 8, or 12 in. diameter



*Fly ash line cleaned using RJV self-rotating nozzle*

- Durable stainless steel construction
- Easily replaced high pressure seal
- Viscous fluid rotation speed control
- Replaceable 1/4 or 1/8 npt nozzles
- Operates with 2, 4, or 6 jets in balance

## Specifications

Model	RJV		
Length Overall	6.0 in.	15 cm	
Weight, no Head	3 lb	1.4 kg	
Maximum Pressure	15 Kpsi	1000 bar	
Rotation Speed			
Fast	50-250 rpm		
Slow	10-100 rpm		
Flow Capacity	35 gpm	133 l/min	
Flow Rating, Cv	1.6		
Ports	Inlet 1/2 npt	Outlet 1/4 npt	
Head	<b>RJ 043-P2-6</b>	<b>RJ 044-P4-6</b>	
Diameter	2.0 in. 51 mm	2.5 in. 64 mm	
Head Offset	.30 in.	.15 in.	.08 in.
5 Kpsi	4-8 gpm	8-17 gpm	17-35 gpm
10 Kpsi	5-9 gpm	9-18 gpm	18-35 gpm
15 Kpsi	6-11 gpm	11-21 gpm	21-35 gpm