



HALTEC (CHESTER) LTD

CONSULTING CIVIL AND STRUCTURAL ENGINEERS

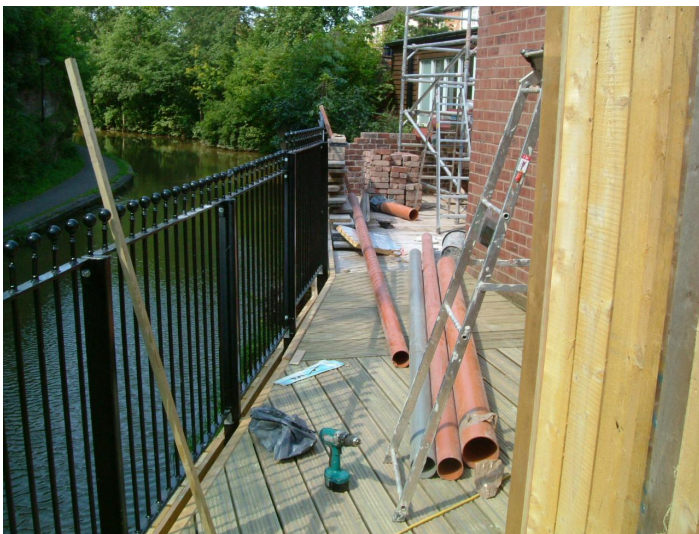
PROJECT DESCRIPTION:

CITY MISSION, CHESTER

This scheme was part of the enabling works package for the Chester Northgate Development. The works involved the refurbishment of a former church on George Street in Chester for use by the City Mission.

Haltec Services:

- Detailed Structural Specification and design.
- Site assistance.
- Building Regulations submission.
- Initial building condition surveys.
- Site Investigations.
- Remedial works to structural defects.
- Complex suspended access deck to rear adjacent to the canal.



For further information visit our web site www.haltec-chester.co.uk

Haltec Consulting Engineers

Unit 13a, Mollington Grange
Parkgate Road
Mollington
Chester
(T) 01244 853883 (F) 01244 853892

PROJECT TEAM:

CLIENT:	ING REAL ESTATE DEVELOPMENTS
ARCHITECT:	TWEED NUTTALL WARBURTON
QS:	DEACON AND JONES
CONTRACTOR:	McGOFF AND BYRNE