



# HALTEC (CHESTER) LTD

CONSULTING CIVIL AND STRUCTURAL ENGINEERS

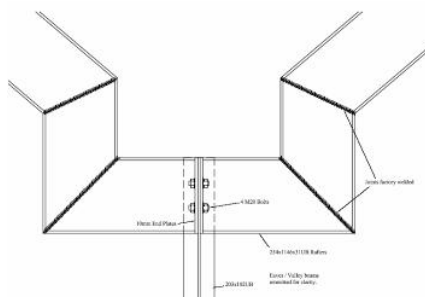
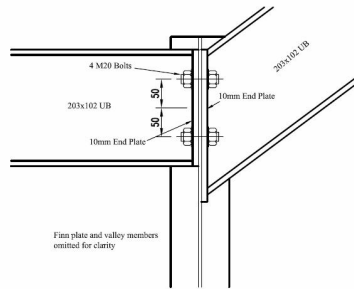
## PROJECT DESCRIPTION:

## GROSVENOR PULFORD HOTEL, CHESTER

The design of this complex geometric steel frame resulted in a feature in the RIBA Architecture review North West 2005. With large spans and limited column positions an ingenious use of steel columns and the original hotel structure were used to produce an award winning restaurant.

### Haltec Services:

- Detailed Structural design of complicated glazed steel frame.



For further information visit our web site [www.haltec-chester.co.uk](http://www.haltec-chester.co.uk)

### Haltec Consulting Engineers

Unit 13a, Mollington Grange  
Parkgate Road  
Mollington  
Chester  
(T) 01244 853883 (F) 01244 853892

### PROJECT TEAM:

CLIENT: GROSVENOR PULFORD HOTEL  
ARCHITECT: CHESHIRE ARCHITECTS  
QS:  
CONTRACT VALUE: