



HALTEC (CHESTER) LTD

CONSULTING CIVIL AND STRUCTURAL ENGINEERS

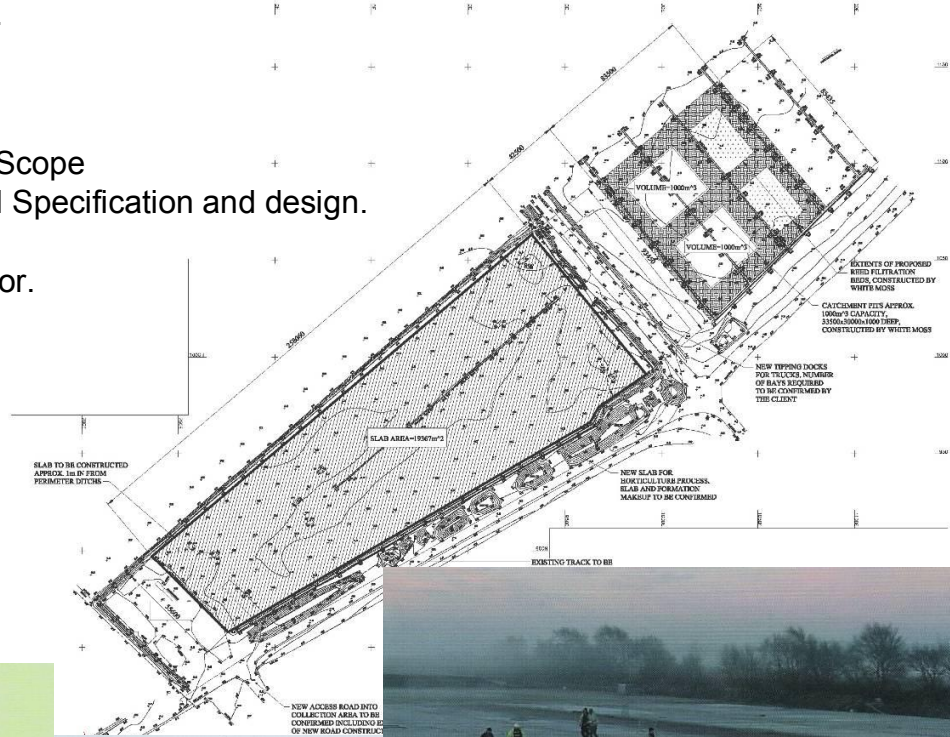
PROJECT DESCRIPTION:

WHITE MOSS, KIRKBY

This project was the construction of a new composting site, with the construction of a purpose built 20,000m² concrete slab built for the growing of quality compost media substrates. The site was the first co-production site in the UK, with composting, peat extraction and growing media production all occurring on the one site.

Haltec Services:

- Initial Design and Scope
- Detailed Structural Specification and design.
- Project Manager
- Planning Supervisor.



For further information visit our web site www.haltec-chester.co.uk

Haltec Consulting Engineers

Unit 13a, Mollington Grange
Parkgate Road
Mollington
Chester
(T) 01244 853883 (F) 01244 853892

PROJECT TEAM:

CLIENT:	WHITE MOSS
ARCHITECT:	D MORGAN PLC
QS:	WALFORDS
CONTRACT VALUE:	£1.25 MILLION