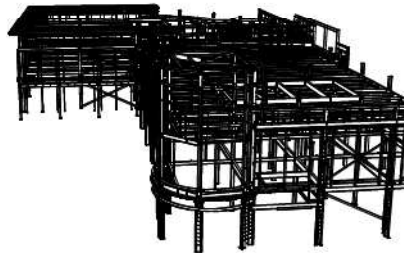
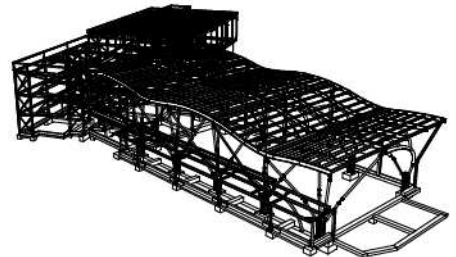
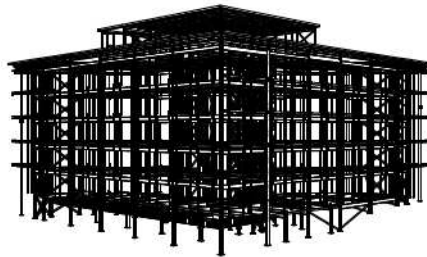
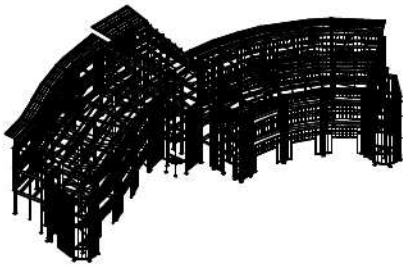


# MICKLEWRIGHTS

## STRUCTURES LTD.

We Design, Manufacture and Erect all types of structural steelwork.

With over 50,000sq.ft of workshop and offices dedicated to producing up to 10,000 tons of structural steelwork each year. We can produce what you want, when you need it.



We also have 8 directly employed erection gangs to ensure site operations are carried out both quickly and safely.

**Tel: 01384 258400**

E-Mail: [enquiries@micklewrights.com](mailto:enquiries@micklewrights.com)  
Unit 33, Thornleigh Trading Estate, Blowers Green, Dudley. DY2 8UB  
Registered: Cardiff No. 5051416 V.A.T. Reg No. 833 3113 63

**Fax: 01384 256700**



### KDS Drilling Machine

CNC controlled with 3 heads capable of drilling the web and both flanges simultaneously. The equipment is also fitted with contour marking that can indicate the positions of plates and fittings for increased accuracy.



### Process Bay Layout



### FDB 600 Fittings Machine

This machine accurately manufactures plates by means of flame cutting and drilling. This means plates can be produced up to 50mm thick and profiled to any shape.



### KDS Saw Machine

With our new CNC controlled bandsaw we can easily square cut beams up to 1025mm deep by 425mm wide. We can also mitre cut up to 914mm deep beams. (45° maximum angle).



### KPS Fittings Machine

The CNC controlled machine accurately manufactures plates and angle cleats. It can also stamp the part number if required.

#### Capacity

Flats upto 500x25mm – Mitre cuts and punches round, square or slotted holes.  
Angles upto 160x160x16mm - Punches round, square or slotted holes in both legs.



### Shot Blasting Machine

Our shot blasting machine means we can blast clean all steelwork prior to fabrication. This aids the welding, fabrication and painting processes.



### **Structural Steelwork Fabrication Bay**

The sections and plates arrive on cross conveyers from the process bay, flow down the fabrication shop and then out into the spray bay.



### **Spray Bay**



### **Loading bay**

The spray and loading bays ensure steelwork can be painted and loaded in any weather conditions.



In addition we have a separate bay for trial assembly, specials, curves, trusses and architectural work etc.

This bay also has its own spraying and loading facilities.