

### Imaging by Professionals

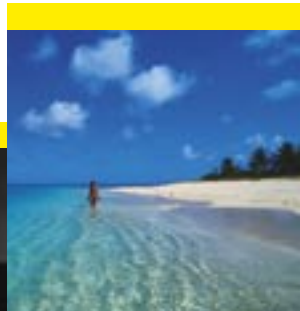
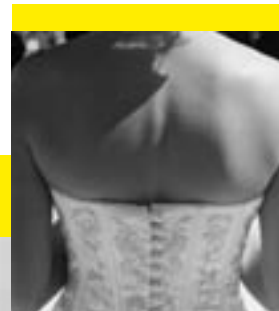
- Photographic processing and printing
- Digital imaging and printing
- Print from print and restoration services
- Large display and mounting services
- Real black and white machine and hand printing

PRICE GUIDE  
2005

[WWW.MOORLANDPHOTO.CO.UK](http://WWW.MOORLANDPHOTO.CO.UK)

123, Moorland Road  
Burslem  
Stoke on Trent  
Staffordshire  
ST6 1JD

Tel. +44 (0)1782 814861  
Fax. +44 (0)1782 835907  
Email. [digital@moorlandphoto.co.uk](mailto:digital@moorlandphoto.co.uk)



Imaging by Professionals

Since Moorlands Imaging first opened 33 years ago our first priority has been to provide a full professional service which meets the needs of our customers, for speed, efficiency and quality. This is still our most important goal.

As new technology and new techniques have been developed we have sought to compete by installing the latest hi-tech equipment of the best possible quality to match the ever widening demands of today's professional client.

Our main strength lies in the personal attention we give to all our customers and we pride ourselves in being large enough to provide a comprehensive service, yet small enough to retain that all important personal touch.

Special requirements can be catered for, all you have to do is give us a call on (01782) 814861 and we will be happy to provide a quotation.

Moorlands Imaging are active participants in the Kodak Q-Lab, Agfa Labcheck and Fuji Hunt monitoring services. These services ensure Moorlands Imaging comply to very strict specifications, and is an assurance of our high standards.

For many years Moorlands Imaging have been active members of the Professional Photographic Laboratories Association (PPLA) and is proud to adopt its principles and published code of practice.

Moorlands Imaging are continually looking towards the future and investing in new technology.

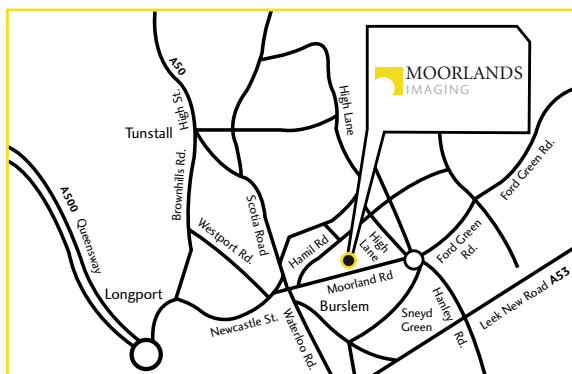
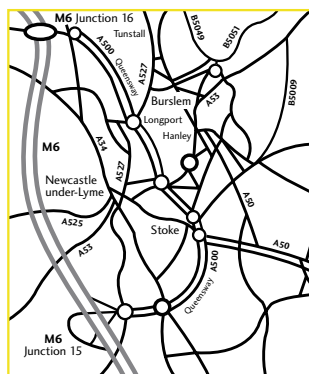
**CONTACT US**

Moorlands Imaging, 123 Moorland Road,  
Burslem, Stoke on Trent, Staffordshire ST6 1JD  
Tel. +44 (01782) 814861  
Fax. +44 (01782) 835907  
E-mail. [digital@moorlandphoto.co.uk](mailto:digital@moorlandphoto.co.uk)  
[enquiries@moorlandphoto.co.uk](mailto:enquiries@moorlandphoto.co.uk)  
[www.moorlandphoto.co.uk](http://www.moorlandphoto.co.uk)

**OPENING TIMES**

Monday-Friday 8am - 5.30pm  
Saturday 9am - 12pm (Reception only)

**HOW TO FIND US**



**ACKNOWLEDGEMENTS**

Images courtesy of Sarah Hill, Leslie Meredith,  
Ray Walker, The Image Factory, Robert Kent,  
Philip Price

Graphic design by Graphics Shed Limited  
Tel. +44 (01889) 882721

Produced in house on Fuji Crystal Archive paper  
and printed on Noritsu 3001.



- FILM PROCESSING 4
- 120 PROCESS AND PRINT 5
- 35MM PROCESS AND PRINT 6
- MACHINE COLOUR PRINTS 7/8
- SELECTIVE MACHINE PRINTS & DIGITAL PRINT PACKAGES 9
- SCANNING SERVICES 10
- EXHIBITION SERVICES & DIRECT PRINTS 11
- FILM SERVICES 12
- BLACK & WHITE PROCESS & PRINT 13
- BLACK & WHITE HAND & MACHINE PRINTING 14
- MOUNTING, FINISHING & ENCAPSULATING 15
- CANVAS WRAP, BESPOKE FRAMING & RETAIL SALES 16
- NON PROFESSIONAL PHOTOGRAPHIC SERVICES 17
- TERMS & CONDITIONS 18

Daily internal participation in strict industry process monitoring ensures the highest degree of consistency and accuracy in our C41 and E6 line.

**C41 & E6 PROCESSING ONLY**

PRICE PER FILM OR SHEET

120	220	35MM	5x4	10x8
3.70	5.40	3.70	1.95	3.50

UP AND DOWN RATING IS AT NO EXTRA CHARGE PROVIDING IT IS AT OUR CONVENIENCE OTHERWISE A SURCHARGE MAY BE MADE.

**COLOUR CONTACT SHEETS**

FROM NEGATIVE  
TRADITIONAL STYLE CONTACT SHEETS.  
PRICE DOES NOT INCLUDE FILM PROCESSING.

35MM	120	5x4 SINGLE	5x4 4 UP
7.50	7.50	3.50	7.50

**BLACK & WHITE PROCESSING**

FINE GRAIN DEVELOPING KODAK XTOL

120	220	35MM	5x4	10x8
4.10	5.80	4.10	2.30	4.30

**BLACK & WHITE CONTACT SHEETS**

THIS PRICE DOES NOT INCLUDE FILM PROCESSING

120	35MM	5x4 4 ON	10x8
5.95	5.95	5.95	5.95

**E6 PROCESS & MOUNT**

IN GLASSLESS PLASTIC MOUNT

35MM UPTO 12EXP	35MM UPTO 24EXP	35MM UPTO 36EXP
3.99	5.14	5.60

**LARGE INDEX PRINTS**

FROM NEGATIVE, TRANSPARENCIES & DIGITAL FILES  
DIGITALLY PRODUCED LARGE INDEX PRINTS (12" X 8")  
PRICE DOES NOT INCLUDE FILM PROCESSING.

AT TIME OF FILM DEVELOPING FROM PREVIOUSLY DEVELOPED FILMS

120	35MM	120	35MM
3.00	3.00	3.50	3.50

INDEX PRINT WITH ANY PRINT PACKAGE DEAL JUST £1.50

**MOUNTING ONLY**

In glassless plastic mounts 8p each.  
In GEPE glass mounts 39p each.  
Slide boxes for glassless plastic mounts:  
24exp 45p each.  
36exp 55p each.

**CLIP TEST**

Clip tests are available from 35mm and 120 E6 roll films.  
Clips from 120 rolls will be from the end of the roll, unless a front end clip test is requested.

Clip test	£2.50
Front end clip test	£5.00

High quality colour prints (not proofs) from substantially the whole of the negative. All prints are individually assessed and are produced borderless on lustre or glossy paper. No burning in or shading is possible.

The economic pricing of process and print packages is only made possible by all negatives on the film being printed to the same size(s). Where different sizes from different negatives are requested then a further charge will be made. 220 films are charged at twice 120 films. Multiple discounts only apply when two or more films of the same size and type are printed to the same print size and quantity.

We offer complete sets of reprints from already developed films. Just add 25% to the single roll price.

Why not have a large index print at the same time as your process and print package for just £1.50.

**10 ON 120 PROCESS & PRINT PACKAGE**

	5x4	7x5	8x6	10x8	12x10
1 film	6.33	9.84	11.82	16.99	21.05
2-4 films	5.51	8.56	10.28	14.78	18.31
5+ films	4.87	7.58	9.10	13.08	16.21

**12 ON 120 PROCESS & PRINT PACKAGE**

	5x5	7x7	8x8	10x10	12x12
1 film	7.04	13.47	13.75	19.74	21.45
2-4 films	6.12	11.72	11.96	17.17	18.66
5+ films	5.42	10.17	10.59	15.20	16.52

**15 ON 120 PROCESS & PRINT PACKAGE**

	5x4	7x5	8x6	10x8	12x10
1 film	8.10	13.20	16.20	24.00	30.00
2-4 films	7.05	11.48	14.09	20.88	26.10
5+ films	6.24	10.16	12.47	18.48	23.10

ADDITIONAL SETS ORDERED AT SAME TIME LESS 25%

**120 SEPIA EFFECT PROCESS & PRINT PACKAGE**

Sepia effect prints are available from both colour and black and white negatives. Just add 25% to the above prices.

The sepia effect print is produced onto colour paper with no contrast correction, this service is available from C41 and black and white films. Unless a sample accompanies the order, the colour will be produced to the lab standard (printed by Moorlands).



Moorlands Imaging professional process and print prices from 35mm negs are designed to give a very competitively priced product for the professional portrait, wedding and commercial photographer.

High quality colour prints (not proofs) from substantially the whole of the negative. All prints are individually assessed and are produced on borderless lustre or glossy paper. No burning in or shading is possible.

The economic pricing of process and print packages is only made possible by all negatives on the film being printed to the same size(s). Where different sizes from different negatives are requested then a further charge will be made.

We offer complete sets of reprints from already developed films. Just add 25% to the single roll price.

Why not have a large index print at the same time as your process and print package for just £1.50.

## 35MM PROCESS & PRINT PACKAGE

	5x3 1/2 & 6x4	7 1/2x5	9x6	10x7	12x8
12 exp 35mm	4.88	5.84	8.24	12.32	12.56
24 exp 35mm	7.76	9.68	14.48	22.64	23.12
36 exp 35mm	10.64	13.52	20.72	32.96	33.68

ADDITIONAL SETS ORDERED AT SAME TIME LESS 25%



## SEPIA EFFECT 35MM PROCESS & PRINT PACKAGE

Sepia effect prints are available from both colour and black and white negatives. Just add 25% to the above prices.

The sepia effect print is produced onto colour paper with no contrast correction, this service is available from C41 and black and white films. Unless a sample accompanies the order, the colour will be produced to the lab standard (printed by Moorlands).

## PROCESS & MULTI PRINT PACKAGE

Various combinations of packages of matching prints are possible from 120 and 35mm films. Just combine the prices of the above and deduct 15% from the total i.e. a 35mm 36 exp film comprising one 9x6 and two 6x4 would be charged at the following, one @ £20.72 two @ £10.64 which equals £42.00 less 15%, a total of £35.70.

## SCHOOL PACKAGES

We offer a comprehensive school package service tailored to meet individual needs. Ideal for schools, clubs, nurseries etc. A separate price list is available on request.

Top quality prints from substantially the whole of the image. All prints are individually assessed and are produced borderless on Lustre or Glossy paper. The prints are of fixed magnification and no selectivity, burning in or shading is possible, please note we are unable to print to the very edge of the negative, so allowances must be made when composing at camera stage.

Many of the machine print sizes offered do not exactly match the negative format and allowances must be made for this when ordering. Exact colour matching is not possible due to the limitations of the machinery, but where close matching to samples or previous prints is required, an extra charge may be made to cover the cost of additional testing.

There is no guarantee of perfect colour matching for repeat prints.

**The sample must accompany the order.**

## FROM 35MM NEGS, TRANS & DIGITAL FILES

UP TO	1	2	5	10	25	50	100
5x3 1/2	1.00	0.92	0.85	0.75	0.65	0.55	0.45
6x4	1.00	0.92	0.85	0.75	0.65	0.55	0.45
7x5	1.50	1.38	1.27	1.12	0.97	0.82	0.67
9x6	2.10	1.93	1.78	1.57	1.36	1.15	0.94
10x7	2.75	2.53	2.34	2.06	1.79	1.51	1.24
12x8	2.95	2.71	2.51	2.21	1.92	1.62	1.33
15x10	4.50	4.14	3.82	3.37	2.92	2.47	2.02
16x11	5.50	5.06	4.67	4.12	3.57	3.02	2.47
18x12	6.00	5.52	5.10	4.50	3.90	3.30	2.70
20x14	12.00	11.04	10.20	9.00	7.80	6.60	5.40
24x16	13.00	11.96	11.05	9.75	8.45	7.15	5.85
30x20	18.00	16.56	15.30	13.50	11.70	9.90	8.10
36x24	32.00	29.44	27.20	24.00	20.80	17.60	14.40
45x30	40.00	36.80	34.00	30.00	26.00	22.00	18.00

## FROM 15 & 10 ON 120 NEGS & TRANS

	1	2	5	10	25	50	100
5x3 1/2/5x4	1.00	0.92	0.85	0.75	0.65	0.55	0.45
7x5	1.50	1.38	1.27	1.12	0.97	0.82	0.67
8x6	2.10	1.93	1.78	1.57	1.36	1.15	0.94
10x8	2.95	2.71	2.51	2.21	1.92	1.62	1.33
13x10/12x10	4.50	4.14	3.82	3.37	2.92	2.47	2.02
15x11/14x11	5.50	5.06	4.67	4.12	3.57	3.02	2.47
16x12/15x12	6.00	5.52	5.10	4.50	3.90	3.30	2.70
21x16/20x16	13.00	11.96	11.05	9.75	8.45	7.15	5.85
27x20/24x20	21.00	19.32	17.85	15.75	13.65	11.55	9.45
32x24/30x24	32.00	29.44	27.20	24.00	20.80	17.60	14.40
40x30	40.00	36.80	34.00	30.00	26.00	22.00	18.00

ALL PRICES ARE PRICED PER PRINT FROM ONE NEGATIVE AND DO NOT INCLUDE VAT



PLEASE NOTE ALL PRICES ARE EXCLUSIVE OF VAT

PLEASE NOTE ALL PRICES ARE EXCLUSIVE OF VAT

Top quality prints from substantially the whole of the image. All prints are individually assessed and are produced borderless on Lustre or Glossy paper. The prints are of fixed magnification and no selectivity, burning in or shading is possible, please note we are unable to print to the very edge of the negative, so allowances must be made when composing at camera stage.

Many of the machine print sizes offered do not exactly match the negative format and allowances must be made for this when ordering. Exact colour matching is not possible due to the limitations of the machinery, but where close matching to samples or previous prints is required, an extra charge may be made to cover the cost of additional testing.

There is no guarantee of perfect colour matching for repeat prints.

The sample must accompany the order.

FROM 12 ON 120 NEGS & TRANS

	1	2	5	10	25	50	100
5x5	1.00	0.92	0.85	0.75	0.65	0.55	0.45
6x6	1.50	1.38	1.27	1.12	0.97	0.82	0.67
7x7	1.75	1.61	1.49	1.31	1.14	0.96	0.79
8x8	2.10	1.93	1.78	1.57	1.37	1.15	0.94
10x8	2.95	2.71	2.51	2.21	1.92	1.62	1.33
10x10	3.65	3.35	3.09	2.74	2.36	2.00	1.64
12x10	4.50	4.14	3.82	3.37	2.92	2.47	2.02
12x12	5.50	5.06	4.67	4.12	3.57	3.02	2.47
15x12	6.00	5.52	5.10	4.50	3.90	3.30	2.70
20x16	13.00	11.96	11.05	9.75	8.45	7.15	5.85
20x20	15.00	13.80	12.75	11.25	9.75	8.25	6.75
24x20	21.00	19.32	17.85	15.75	13.65	11.55	9.45
24x24	26.00	23.92	22.10	19.50	16.90	14.30	11.70
30x24	32.00	29.44	27.20	24.00	20.80	17.60	14.40
30x30	35.00	32.20	29.75	26.25	22.75	19.25	15.75
40x30	40.00	36.80	34.00	30.00	26.00	22.00	18.00



MINI PRINTS

	50	100	250	500
	12.50	20.00	37.50	60.00

ANY QUANTITY UNDER 50 WILL BE CHARGED @ 5 x 31/2 RATE.  
 ALL MINI PRINTS WILL BE PRODUCED WITH DOUBLE SIDED ADHESIVE TAPE.  
 DOUBLE SIDED TAPE CAN BE APPLIED TO THE FOLLOWING SIZED PRINTS AT THE COST SHOWN.  
 5 x 31/2 @ 4P PER PRINT 6 x 4 @ 6P PER PRINT 7 x 5 @ 8P PER PRINT.  
 ALL PRICES ARE PRICED PER PRINT FROM ONE NEGATIVE AND DO NOT INCLUDE VAT

PLEASE NOTE ALL PRICES ARE EXCLUSIVE OF VAT

SELECTIVE MACHINE PRINTS

With the introduction of sophisticated digital printing technology, we are able to offer at machine print prices a wide variety of services. This includes selective printing. Black and white and sepia prints from colour negatives and transparencies. Sepia prints from black and white negatives. Reduction of red eye, correction for contrast and sharpness. These services are available from neg, transparency and digital files. The print sizes shown are the finished size and are available on both glossy and lustre. All prints are produced on colour paper.

UP TO	1	2	5	10
6x4	1.20	1.10	0.85	0.75
7x5	1.80	1.66	1.27	1.12
9x6/8x8	2.52	2.32	1.78	1.57
10x7/12x8	3.54	3.26	2.51	2.21
15x10	6.00	5.52	3.82	3.37
18x12	7.80	7.18	5.10	4.50

ALL PRICES ARE PRICED PER PRINT FROM ONE NEGATIVE AND DO NOT INCLUDE VAT



DIGITAL PRINT PRICES

Real photographic prints from your digital media available on glossy and lustre paper. All our prints are fully colour corrected.

	1-9	10-19	20-29	30-49	50-99	100+
5x4/5x5/6x4	1.00	0.65	0.55	0.50	0.45	0.40
7 1/2x5/7x5	1.25	0.75	0.65	0.60	0.55	0.50
8x8/8x6/9x6	1.50	1.10	1.00	0.90	0.80	0.70
10x7/10x8	2.00	1.35	1.25	1.15	1.05	0.90
12x8/10x10/A4	2.75	1.55	1.45	1.35	1.25	1.05
12x10/12x12	3.25	2.75	2.15	1.90	1.70	1.55
16x12/18x12/A3	5.50	4.50	4.00	3.50	3.25	3.00

- TO ENABLE US TO PRODUCE PRINTS AT THESE PRICES WE WOULD ASK FOR A FEW SIMPLE GUIDELINES TO BE FOLLOWED.
- ALL FILES SHOULD BE CROPPED TO THE CORRECT PROPORTIONS OF THE FINAL PRINT SIZE.
- PLEASE PLACE FILES IN FOLDERS MARKED BY SIZE I.E. 10x8, 8x6 ETC.
- FILES SHOULD BE SAVED AS TIFF OR JPEG WITH NO LZW COMPRESSION AND THE CORRECT FILE EXTENSION. NO LAYERS AND 8 BIT COLOUR.
- FILES SHOULD BE BETWEEN 150 AND 300DPI AT THE PRINT SIZE THAT HAS BEEN ORDERED.
- PLEASE INDICATE ON AN ORDER SHEET THE TOTAL NUMBER OF FILES IN EACH FOLDER, ORDER SHEETS ARE AVAILABLE TO DOWNLOAD FROM THE WEBSITE ETC.

IF WE HAVE TO CHANGE THE PRINTS FOR CROPPING AND SIZE WE MAY HAVE TO CHARGE THE PRINTS AT MACHINE PRINT PRICE. SEE PAGE 7.

PLEASE NOTE ALL PRICES ARE EXCLUSIVE OF VAT

**PROCESS & SCANNING PACKAGES**

Ideal for the photographer who wishes to remain with film while adding all the additional benefits of digital. Available from APS, 35mm, 120 neg and transparency (35mm transparency unmounted) and black and white.

- **Low Res** – FILE SIZE UP TO 1MB (512x768 PIXELS) IDEAL FOR VIEWING ON SCREEN, UPLOADING TO THE INTERNET, AND DESKTOP PRINTING TO THUMBNAIL SIZE. SCANS ARE SUPPLIED AS JPEG, WRITTEN TO CD WITH AN INDEX PRINT.
- **STANDARD RES** – FILE SIZE UP TO 5MB (1024x1535 PIXELS) SUITABLE FOR PHOTOGRAPHIC PRINTING UP TO 8x6. SCANS ARE SUPPLIED AS JPEG, WRITTEN TO CD WITH AN INDEX PRINT.
- **MEDIUM RES** – FILE SIZE UP TO 18MB (2048x3072 PIXELS) SUITABLE FOR PHOTOGRAPHIC PRINTING UP TO 18x12. SCANS ARE SUPPLIED AS JPEG WRITTEN TO CD WITH AN INDEX PRINT.

	35MM/APS UPTO 25EXP	35MM/APS UPTO 40EXP	120/10 ON	120/12 ON	12/15 ON
<b>Low Res.</b>	5.10	5.10	5.10	5.10	5.10
<b>Standard Res.</b>	10.00	12.00	8.00	9.60	12.00
<b>Medium Res.</b>	14.00	20.00	10.00	12.00	15.00

THE ABOVE PRICES ARE ONLY APPLICABLE TO UNDEVELOPED FILMS.

- ALREADY DEVELOPED FILMS CAN BE SCANNED AS ABOVE AT AN ADDITIONAL CHARGE OF 25%.
- ALL IMAGES SAVED AS RGB FILES AND SAVED ON MOORLANDS STOCK CD'S. EACH FILM WILL BE WRITTEN TO AN INDIVIDUAL CD.
- ADDITIONAL CD'S ORDERED AT THE SAME TIME £3. ADDITIONAL INDEX PRINTS ORDERED AT SAME TIME £1.50.
- ALL FILE SIZES ARE APPROX. AND ARE THE OPENED IMAGE SIZE.
- IMAGES ON THE CD AND INDEX PRINT DO NOT NECESSARILY CORRESPOND WITH NEG. NUMBERS.

**MOUNTED 35MM TRANSPARENCIES**

Mounted 35mm transparencies can be scanned at an economical price providing there are over 20 different slides.

Low Res.	Standard Res.	Medium Res.
0.50	0.83	1.00

MINIMUM SCAN ORDERS FROM 20 DIFFERENT SLIDES.

**INDIVIDUAL SCANS**

From all sizes of transparency and negatives and artwork up to A3.

In addition to the resolutions supplied above we offer an additional two levels of service.

- **High res** – File size up to 70mb suitable for photographic printing up to 40 inches. Scans are supplied as JPEG or TIFF. Written to CD with an index print.
- **Ultra high res** – File size 100-200mb a bespoke service catering for the most demanding of situations and tailored to meet the individual clients needs.

Low Res.	Standard Res.	Medium Res.	High Res.	Ultra High Res.
2.00	4.50	6.00	10.00	15.00

PLEASE NOTE ALL PRICES ARE EXCLUSIVE OF VAT

**EXHIBITION SERVICES**

We can cater for your entire exhibition providing a complete package of large format prints to a wide variety of stands. We can produce photographic prints up to 50" wide by almost any length. High quality banner stands, pop up displays and hiring of display stand are all available.

Top quality photographically produced (backlit) display transparencies are available from neg, trans or digital files just add 50% to machine printing prices.

**DIRECT PRINTS**

From originals prints and artwork up to A3.

Finished print size	UP TO 6x4	UP TO 7x5	UP TO 9x6	UP TO 10x8	UP TO 12x10	UP TO 18x12
	7.00	7.50	8.10	8.95	10.50	13.00

ADDITIONAL COPIES PRINTED AT TIME OF ORIGINAL ORDER WILL BE CHARGED AT MACHINE PRINT PRICES.

WE DO NOT ARCHIVE PRINT FROM PRINTS. ALL IMAGES ARE RETURNED TO THE CUSTOMER WITH A CD.

FOR ORIGINALS LARGER THAN 18x12 JUST ADD £20.00 TO THE FINISHED PRINT SIZE YOU REQUIRE.

**RETOUCHING & RESTORATION**

With modern day technology and our highly skilled operators, we have the ability to restore your treasured images. Manipulate your images and create new.

Our hourly rate for digital manipulation is £40.00 and is calculated in 15 minute intervals, with a minimum charge of £10.00.

PLEASE REMEMBER WHEN WORKING OUT COSTS TO INCLUDE THE PRICE OF ANY SCANNING AND PRINTING THAT MAY BE REQUIRED.

As an example the approx. cost of opening eyes and producing an 8x8 print of the new image would be made up as follows:

2 scans	2 x £6.00	£12.00
Computer work (15 mins)	1 x £10.00	£10.00
8x8 print and new image saved to CD		£2.85

**TOTAL £24.85**

This example is only an estimate and the cost may be more depending on the amount of computer time.

**COPYRIGHT**

Copy orders are accepted on the understanding that the customer holds the copyright, or has written permission from the copyright holder and will be entirely responsible in any dispute. See our terms of business.

**DIGI PRINT PRO**

A comprehensive workflow solution for file management and digital printing, tailored to your specific needs. Please ask for further details.

PLEASE NOTE ALL PRICES ARE EXCLUSIVE OF VAT

**SLIDE DUPLICATION**

Top quality hand made dupes, individually corrected for colour and density.

ORIGINALS	OUTPUT TO 35MM FORMAT			
	1	2-4	5-9	10+
120-5x4	7.50	4.25	3.00	2.00

ORIGINALS	OUTPUT TO 120 FORMAT			
	1	2-4	5-9	10+
35mm/120/5x4	14.00	10.00	6.50	5.50

ORIGINALS	OUTPUT TO 5x4 FORMAT			
	1	2-4	5-9	10+
35mm/120/5x4	20.00	15.00	10.00	8.00

**35MM DUPLICATE TRANSPARENCIES**

High quality 35mm slides from 35mm originals.

NO OF ORIGINALS	QUANTITY FROM EACH ORIGINAL					
	1	2-4	5-9	10-25	26-50	55-100
1	4.10	3.07	2.17	1.89	1.52	1.27
2-4	3.40	2.55	1.80	1.56	1.26	1.05
5-9	3.00	2.25	1.59	1.38	1.11	0.93
10-24	2.50	1.87	1.32	1.15	0.92	0.77
25-49	2.00	1.50	1.06	0.92	0.74	0.62
50+	1.50	1.12	0.79	0.69	0.55	0.46

ALL 35MM DUPLICATE TRANSPARENCIES ARE MOUNTED IN PLASTIC MOUNTS. PLEASE ADD 45P PER FRAME FOR GLASS MOUNTS.

**TRANSPARENCIES & COPY NEGATIVES FROM ARTWORK**

From photographs and artwork up to 40x30.

	Trans.	Negative
35mm	9.00	5.00
5x4	18.00	15.00
10x8	37.00	N/A

**TRANSPARENCIES FROM DIGITAL FILES**

Please supply as RGB JPEG or TIFF files.

	1	Sub copies
35mm	6.00	4.00
5x4	25.00	15.00

SUBSEQUENT COPIES ARE FROM THE SAME ORIGINAL.

ALL 35MM DUPLICATE TRANSPARENCIES ARE MOUNTED IN PLASTIC MOUNTS. PLEASE ADD 45P PER FRAME FOR GLASS MOUNTS.

**BLACK & WHITE PROCESSING**

FINE GRAIN DEVELOPING KODAK XTOL

120	220	35MM	5x4	10x8
4.10	5.80	4.10	2.30	4.30

**BLACK & WHITE CONTACT SHEETS**

THIS PRICE DOES NOT INCLUDE FILM PROCESSING

120	35MM	5x4 40N	10x8
5.95	5.95	5.95	5.95



**PROCESS & PRINT PACKAGES**

High quality prints from substantially the whole of the negative.

All prints are borderless on glossy or lustre paper. No burning in or shading is possible.

**120 PROCESS & PRINT PACKAGE**

	5x3½	5x5	7x5	7x7	8x6	8x8	10x8
10/120	6.33		9.84		11.82		16.99
12/120		7.04		13.47		13.75	19.74
15/120	8.10		13.20		16.20		24.00

**35MM PROCESS & PRINT PACKAGE**

	5x3½ & 6x4	7x5	8x6	10x7	12x8
12exp 35mm	4.88	5.84	8.24	12.32	12.56
24exp 35mm	7.76	9.68	14.48	22.64	23.12
36exp 35mm	10.64	13.52	20.72	32.96	33.68

THE ECONOMIC PRICING OF PROCESS AND PRINT PACKAGES IS ONLY MADE POSSIBLE BY ALL NEGATIVES ON THE FILM BEING PRINTED TO THE SAME SIZE(S). WHERE DIFFERENT SIZES FROM DIFFERENT NEGATIVES ARE REQUESTED THEN A FURTHER CHARGE WILL BE MADE. BLACK AND WHITE PRINTS ARE AVAILABLE FROM COLOUR NEGATIVES SEE PAGES 7, 8 AND 9.

PLEASE NOTE ALL PRICES ARE EXCLUSIVE OF VAT

PLEASE NOTE ALL PRICES ARE EXCLUSIVE OF VAT

FROM 35MM NEGATIVES

	1	2	5	10	25	50	100
5x3 1/2/6x4	1.00	0.92	0.85	0.75	0.65	0.55	0.45
7x5	1.50	1.38	1.27	1.12	0.97	0.82	0.67
8x6	2.10	1.93	1.78	1.57	1.36	1.15	0.94
10x7	2.75	2.53	2.34	2.06	1.79	1.51	1.24
12x8	2.95	2.71	2.51	2.21	1.92	1.62	1.33

FROM 15 AND 10 ON 120 NEGATIVES

	1	2	5	10	25	50	100
5x3 1/2/5x4	1.00	0.92	0.85	0.75	0.65	0.55	0.45
7x5	1.50	1.38	1.27	1.12	0.97	0.82	0.67
8x6	2.10	1.93	1.78	1.57	1.36	1.15	0.94
10x8	2.95	2.71	2.51	2.21	1.92	1.62	1.33

FROM 12 ON 120 NEGATIVES

	1	2	5	10	25	50	100
5x5	1.00	0.92	0.85	0.75	0.65	0.55	0.45
7x7	1.75	1.61	1.49	1.31	1.14	0.96	0.79
8x8	2.10	1.93	1.78	1.57	1.37	1.15	0.94
10x8	2.95	2.71	2.51	2.21	1.92	1.62	1.33

HAND ENLARGING

From negatives up to 5x4 printed on Glossy or Semi Matt paper. Shading or burning in as necessary, if accurate sizing is required please provide a trace.

	1	2	5
7x5	4.24	3.40	2.39
8x6	5.10	4.08	2.81
10x8	5.94	4.75	3.31
12x10	7.65	6.11	4.24
15x12	11.04	8.84	6.11
20x16	13.59	10.86	7.46
24x20	20.16	POA	POA
30x20	24.28	POA	POA



We offer a comprehensive range of finishing services to complement your photographic images.

MATERIALS AVAILABLE

CARD – C

1.5mm or 2mm card depending on print size. Wide range of colours available.

HARDBOARD – H/B

2mm top quality hardboard, maximum size 48x36 inches.

FOAMBOARD – F

5mm or 10mm thick, lightweight rigid board ideal for exhibition displays.

WHITE PVC – PVC

3mm or 5mm hard plastic board with a degree of flexibility.

LAMINATE & HEATSEAL – L&H

PVC laminates bonded to print surface to give extra protection. Heatseal is a laminate bonded to print by heat and pressure.

HIGH GLOSS LAMINATE – HGL

a polyester laminate of very high gloss, which enhances the colour saturation of the finished print.

CANVAS BONDING – C/B

The colour print is bonded onto the canvas allowing the weave to show through. This is available on stretchers or mounted onto hardboard.

ENCAPSULATION – E

Using 125/200 micron thick material depending on print size any form of print can be encapsulated. Customers own materials are encapsulated strictly at their own risk.

	C	H/B	F(5MM)	F(10MM)	PVC(3MM)	PVC(5MM)	L&H	HGL	C/B	E
10x8	3.00	4.00	4.00	4.30	4.90	5.60	3.00	3.20	13.20	2.50
12x10	3.50	4.75	5.30	6.00	7.00	7.90	3.90	4.10	14.50	3.75
16x12	4.50	6.00	7.00	8.00	9.00	11.75	4.95	5.50	17.50	4.95
20x16	5.75	7.50	9.75	10.80	13.00	16.50	6.40	6.75	21.00	5.75
24x20	7.50	9.00	13.25	15.00	17.50	21.00	7.95	9.00	29.00	14.00
30x20	9.50	11.75	16.00	17.75	21.00	25.50	10.20	12.50	35.00	17.25
30x24	11.50	14.00	17.50	22.50	25.50	32.50	12.20	16.00	41.50	17.25
36x24	14.75	17.75	21.50	24.00	29.00	36.75	14.30	18.00	45.00	17.25
40x30	15.50	20.00	25.00	28.75	35.00	42.00	17.50	21.00	49.00	21.50
48x36	20.00	NA	35.00	42.00	50.00	58.00	24.50	39.00	NA	27.50
60x40	NA	NA	55.00	60.00	70.00	85.00	37.00	41.00	NA	45.00

PLEASE NOTE ALL PRICES ARE EXCLUSIVE OF VAT

PLEASE NOTE ALL PRICES ARE EXCLUSIVE OF VAT

**CANVAS WRAP**

The contemporary ready to hang wall image is available in a variety of sizes. The canvas wrap has a canvas effect finish wrapped around the edges of the frame giving a three dimensional image with a thickness of 40mm. The finished product is ready to hang directly on the wall.

UP TO 10x8	12x10	16x12	20x16	24x20	30x20	30x30	40x30
50.00	60.00	65.00	85.00	110.00	130.00	170.00	200.00

- WHEN ORDERING PLEASE REMEMBER THE FOLLOWING:
- AS 40MM OF THE IMAGE IS WRAPPED AROUND THE FRAME ON ALL SIDES PLEASE TAKE THIS INTO CONSIDERATION WHEN CHOOSING YOUR IMAGE AND ITS COMPOSITION.
  - THE SIZE TO ORDER IS THE SURFACE SIZE OF THE FINISHED PRINT.
  - THE PRICE IS THE FINISHED PRODUCT PRICE INCLUDING THE PRINT.
  - THESE PRICES APPLY FOR COLOUR, SEPIA OR BLACK AND WHITE FROM NEGATIVE OR DIGITAL FILES.
  - ANY SIZE IS POSSIBLE AS LONG AS ONE DIMENSION IS A MAXIMUM OF 30 INCHES.
  - ALL PRICES ARE PLUS VAT

**BESPOKE FRAMING**

We offer a comprehensive in house framing service to meet all your framing demands and stock a comprehensive range of bespoke mouldings. Add that all important touch to your image. Prices available at reception.

**RETAIL SALES**

- We offer a comprehensive range of retail products on display in our reception.
- Fully refrigerated film stock
  - Folders
  - Mounts
  - Album's leaves and overlays
  - Batteries, CD's, digital film

**COLOUR PRINTS – 35MM DEV & PRINT**

- Available on glossy or lustre. 1 hour only available on glossy

**6x4**

	1 HOUR	24 HOUR
12EXP	5.99	3.99
EXTRA SET	2.50	2.00
24EXP	6.99	4.99
EXTRA SET	3.00	2.50
36EXP	7.99	5.99
EXTRA SET	4.00	3.00

**7x5**

	1 HOUR	24 HOUR
12EXP	7.99	5.99
EXTRA SET	4.50	3.50
24EXP	8.99	6.99
EXTRA SET	4.99	4.00
36EXP	9.99	7.99
EXTRA SET	5.99	5.00

**BLACK & WHITE – 35MM DEV & PRINT**

- Available on glossy or lustre
- B & W prints printed onto colour paper no variation in grade is possible
- Available for both B&W and generic C41 film
- Up and down rating or special process requirements will be charged at £2.50
- All sepia prints are produced to a lab standard
- The service time on this product is 48 hours

**6x4**

	BLACK & WHITE (48HRS)	SEPIA (48HRS)
12EXP	3.99	4.99
EXTRA SET	2.00	3.00
24EXP	4.99	5.99
EXTRA SET	2.50	3.50
36EXP	5.99	6.99
EXTRA SET	3.00	4.00

**7x5**

	BLACK & WHITE (48HRS)	SEPIA (48HRS)
12EXP	5.99	6.99
EXTRA SET	3.50	4.50
24EXP	6.99	7.99
EXTRA SET	4.00	5.00
36EXP	7.99	8.99
EXTRA SET	5.00	6.00

**COLOUR PRINTS – APS DEV & PRINT**

- Available on glossy only

	1 HOUR	24 HOUR
1-15	7.49	5.49
EXTRA SET	5.49	2.50
16-25	7.99	5.99
EXTRA SET	5.99	3.00
26-40	8.99	6.99
EXTRA SET	6.99	4.00
PANORAMIC SUPPLEMENT (PER PRINT)	25P	25P



PLEASE NOTE ALL PRICES ARE INCLUSIVE OF VAT

# CONVERSION TABLE & TERMS & CONDITIONS

## METRIC CONVERSION TABLE

INCHES	MM	INCHES	MM
5X3½	127x89	18x12	457x305
5X4	127x102	20x14	508x355
6x4	152x102	20x16	508x406
5X5	127x127	20x20	508x508
7X5	178x127	24x16	610x406
7X7	178x178		
A5 – 8¼ x 5⅞	210x148.5	A2 – 23½ x 16½	594x420
8x6	203x152	24x20	610x508
8x8	203x203	24x24	610x610
10x7	254x178	27x20	685x508
10x8	254x203	30x20	762x508
		30x24	762x610
A4 – 11¾ x 8¼	297x210	30x30	762x762
10x10	254x254	32x24	813x610
12x8	305x203		
12x10	305x254	A1 – 33 x 23½	840x594
14x11	355x279	36x24	914x610
15x10	381x254	40x30	1016x762
15x12	381x305	40x40	1016x1016
		45x30	1143x762
A3 – 16½ x 11¾	420x297	A0 – 47 x 33	1188x840
16x11	406x297	48x36	219x914
16x12	406x305	60x40	524x1016

## TERMS & CONDITIONS

### METHODS OF PAYMENT

Customers without a credit account may pay with cash, Switch, Access and Visa cards, and cheques supported to the limit of their cheque guarantee card. Please note we cannot accept card transactions under £5 in value.

### ACCOUNTS

Monthly accounts may be opened on receipt of two satisfactory trade references, and where the turnover exceeds £1500 per annum. Accounts are due monthly and are strictly net. The company reserves the right to charge interest at current rates on the outstanding balance on overdue credit accounts. Moorlands Imaging reserve the right to close any account not used for six months or where the customers purchases do not amount to an average of £1500 per annum. Credit cards cannot be accepted as payment for accounts.

### LIMIT OF LIABILITY

Whilst we take every possible care in handling clients materials, originals, samples etc, we cannot accept responsibility for loss or damage howsoever caused. Your film, negatives, disks and originals are accepted on the understanding that the replacement value does not exceed the price of material.

### STORAGE OF DIGITAL DATA

Moorlands Imaging do not store any digital data unless a specific arrangement has been agreed with the company.

### COPYRIGHT

It is a criminal offence under the Copyright Design and Patents Act 1988 to submit for copying, photographs or artwork, unless you are the holder of the copyright or have written permission from the copyright owner. Therefore, in keeping with the code of practice our Trade Association, copies are only accepted on the understanding that the customer has the legal rights for reproduction and will be entirely responsible in any dispute arising there from, and where copying is requested you will be asked to sign a form to this effect.

PLEASE NOTE ALL PRICES ARE EXCLUSIVE OF VAT

### PRICES

All prices quoted in this price list are subject to VAT at the current rate. With the exception of the prices displayed on page 17 (non professional film services) where VAT is inclusive. All prices are subject to revision without prior notice at the discretion of the company.

### PAPER TYPE

We reserve the right to change the paper type and surface as necessary.

### SERVICE EXPRESS

We reserve the right to levy an express surcharge on orders which are required in less than 3 days. However, this does not automatically mean that we are capable of producing the work in less time than that, and this service can only be offered by prior arrangement.

### TRADE DESCRIPTION ACT

The size of prints quoted in this price list are approximate only and on occasions can be fractionally over or under the size quoted.

### DELIVERY & PACKAGE

All packages are dispatched by first class post unless requested to be sent by special delivery ie. Datapost or Redstar, and will be charged at cost.

### CANCELLATION

In the event of an order being cancelled Moorlands Imaging reserve right to charge for all work completed, materials ordered and work contracted out.

### UNCLAIMED WORK

Any work that we cannot deliver or is not collected within 6 months of completion will be disposed of together with any clients materials and we cannot accept any liability for any loss incurred.