



A combined taper plug valve and FSD control, available either with or without integral piezo. The range of spindle options, thermocouple connections and lengths of Ignitor lead has made this a popular valve in the decorative fuel effect fire market for many years.

Available with a range of low flow rate drillings to cover both natural and LP gases, the range features:

FEATURES

- ⇒ Integral flame supervision device.
- ⇒ Vertically positioned pilot outlet connection
- ⇒ Preset low flow rate
- ⇒ Full CE certification

TECHNICAL DATA

Flow rate: max. - 0.38m³/h on air at 3 mbar p.d.
 Min. - to flow master

Gas connections:

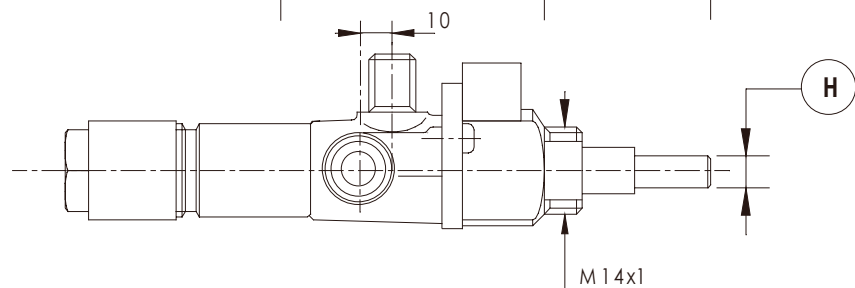
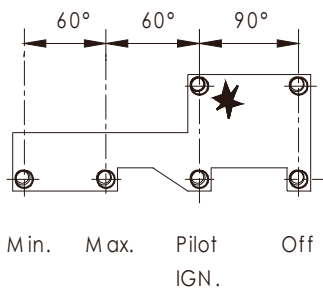
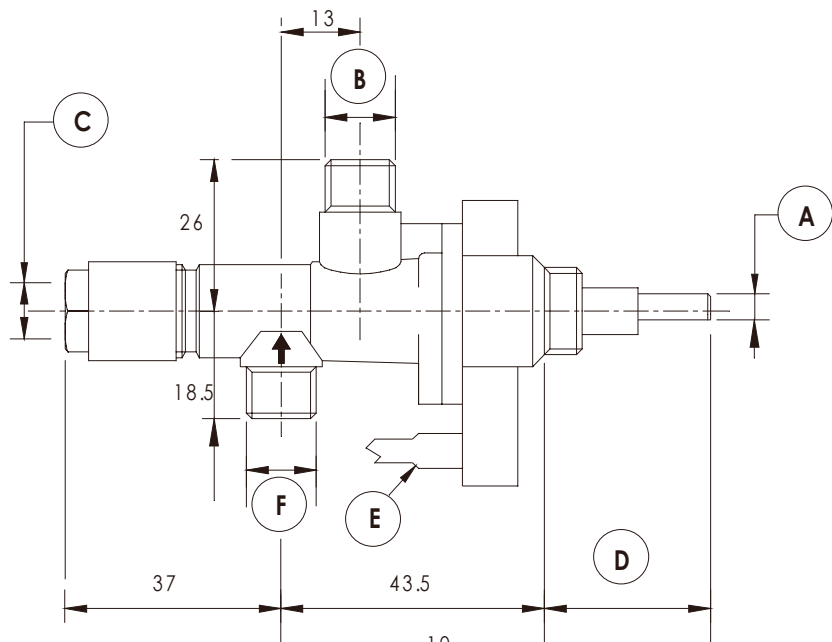
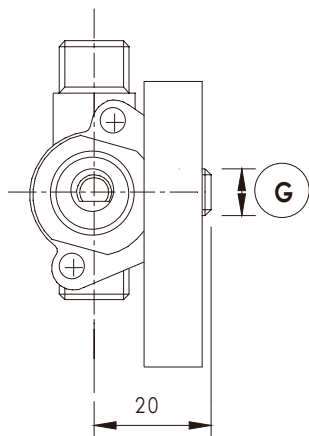
Inlet/outlet - M12 x 1 for 8 mm compression

Pilot - M 8 x 1 for 4 mm compression

Piezo optional, with various lead lengths.

Thermocouple connections: - M8 or M9.

from Seagas



A	B	C	D	E	F	G	H
4.6/5.5	M12 x 1	M8, 9 or M10 x 1	27/41	350	M12 x 1	M8 x 1	6.0/6.35