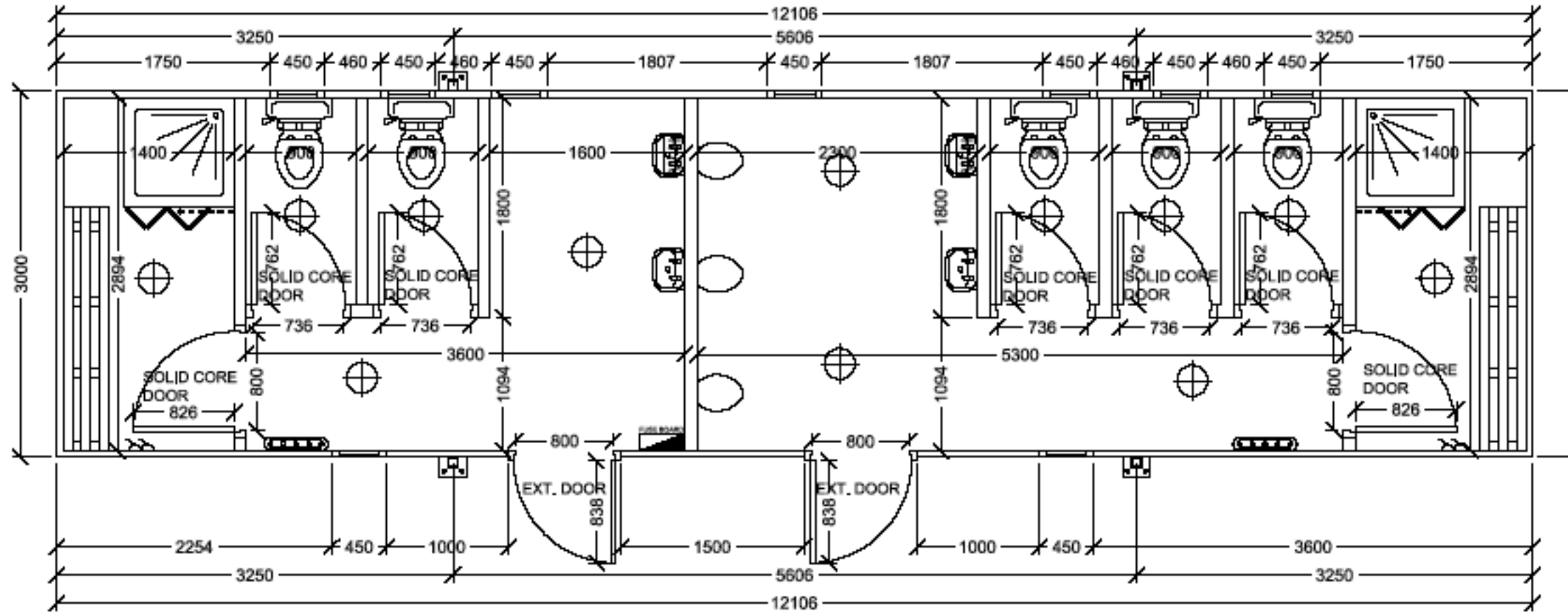
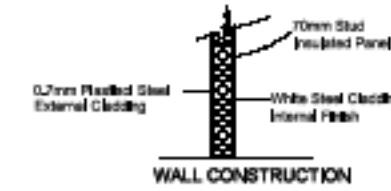


FOR APPROVAL

APPROVED BY: \_\_\_\_\_

DATE: \_\_\_\_\_



**ELECTRICAL LEGEND**

- 2D LIGHT FITTING
- ONE WAY SWITCH
- 13A TWIN SOCKET (SWITCHED)
- UNDER-SINK WATER HEATER
- ELCB FUSE BOARD
- TUBULAR HEATER

**Notes**

- TIMBER FRAMED SPECIFICATION**
- Roof:  
 175 x 38mm Timber Roof Joists.  
 18mm OSB  
 Marley Roof Blanket PVC Membrane
- External Walls: -53mm  
 0.7mm Plated Steel - Goosewing Grey  
 40x55mm Timber Frame  
 40mm High Density Polystyrene Insulation  
 White Steel Cladding Internal Finish
- Ceiling:  
 12.5mm Vinyl Faced Plasterboard  
 2300mm Floor to Ceiling Height
- Floors:  
 Alumised Insulation Sheet  
 175 x 50mm Timber joists  
 18mm Structural Plywood  
 Non-Slip Vinyl Floor Covering
- Internal Partitions: -100mm  
 70x38mm Timber Studs  
 70mm Fibreglass Insulation  
 1No. Layer of White Steel Cladding Each Side to shower/urinal areas  
 Vinyl Faced Plasterboard Internal finish elsewhere
- Windows:  
 9 No. 450 x 450mm White PVC Double Glazed High Level Units
- Doors:  
 2 No. 838mm Steel Bonded External Doors  
 2 No. 826mm Internal Solid Core Doors  
 5 No. 762mm Internal Solid Core Doors
- Electrical:  
 1 No. ELCB Fuse Board  
 12 No. 2 - D Lights  
 2 No. Tubular Heaters  
 2 No. Double Sockets
- Mechanical:  
 2 No. T-90 Triton Electrical Showers with Tray & Door  
 2 No. Under Sink Water Heater  
 4 No. WHBs  
 5 No. WCs  
 3 No. Urinals
- Jacklegs/Trims:  
 4 No. 90mm x 90mm Steel Jacklegs- Ocean Blue  
 Trims- Ocean Blue

No.	Revision	Date

**Convenience Services LTD**  
 By telephone +44 (0) 845 006 0737  
 By Fax +44 (0) 1635 298 548

Client

Project  
 40' x 10' Timber Framed Toilet Unit

Drawing Title  
 Floor Plan

Scale 1:50@A3	Drawing No. 07-0664-01
Date	
Drawn	